

Summary results - years 1999-2012

Table 1. Distribution of letter grades.

Grade	Quantity
A	50
B	77
C	75
D	48
F	27

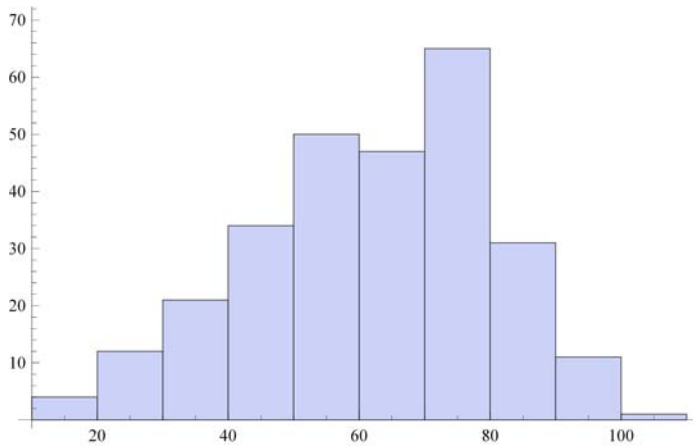


Figure 1. Distribution of end-of-semester point totals, years 1999-2012.

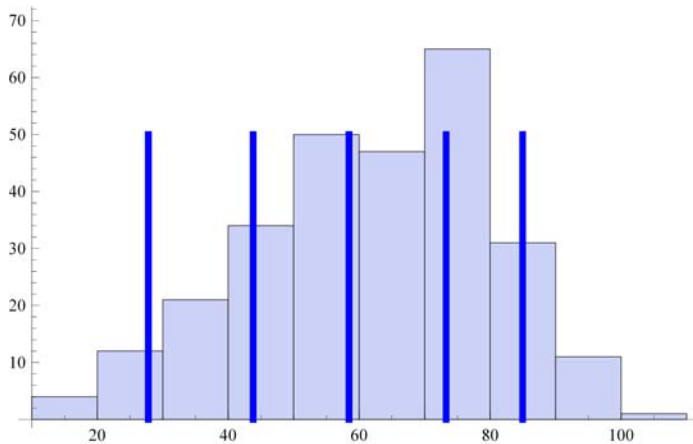


Figure 2. Distribution of end-of-semester point totals with average scores for letter grades F to A.

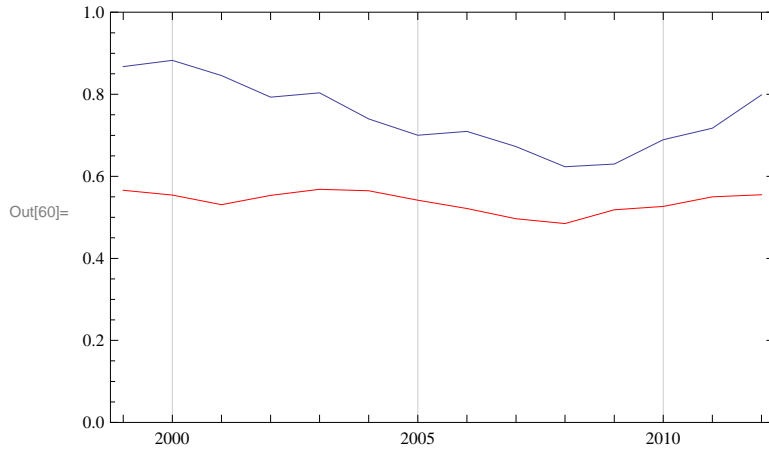


Figure 3. Lowest end-of-semester point total for C grade (in red) and fraction of students with C or better (in blue).

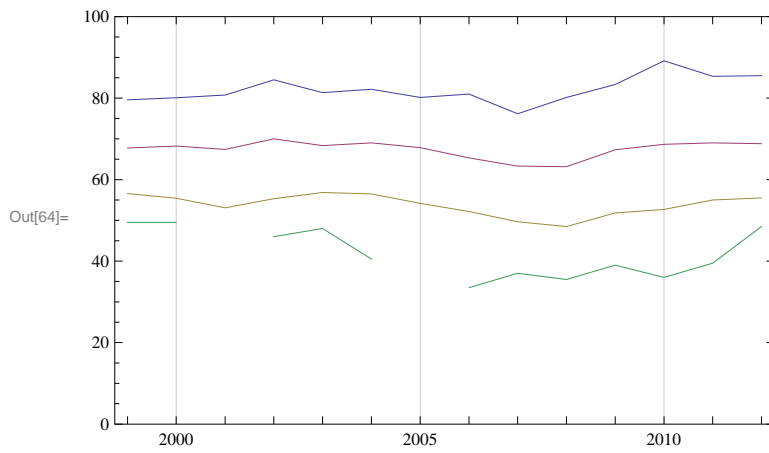


Figure 4. Lowest end-of-semester point totals for each of the letter grades A, B, C, and D.

Calculations

